

HACIENDA WEST

*a boutique*  
DEVELOPMENT

NORTH  
COAST

Get set for a redefined summer as you land your feet on our boutique summer destination, Hacienda West.

This time we're taking you to the west side, where you'll luxuriate every second of it, especially after our massive hit in Hacienda Bay & Hacienda White.

*a boutique*  
DEVELOPMENT



# BOUTIQUE development



Hacienda West is a one of a kind boutique experience in the North Coast for all summer souls who have an eye for beauty and cherish simplicity.

It is the summer escape you've been waiting for. It is the spot for you to unwind & enjoy laid-back luxury in a cozy personalized setting that's found nowhere else.

Wherever you are, you'll enjoy a breathtaking sea view with our elevated homes, along with private lagoons. We've also brought you a sublime hotel to repose & a community hub so you can spend quality time with the people you love. Sip on a cup of coffee & get the relaxation you deserve.



# PERFECTLY *located*

We're taking you West, only 10km away from Ras El Hekma where the shoreline meets the clearest Mediterranean waters.





# DISTINCTIVE *designs*



Our boutique development architecture is all about combining originality and elegance, altogether with authenticity in the heart of the North Coast.

Inspired by Mediterranean architecture, we blended our laid-back luxury feel with a minimalistic approach.

Bringing together a sense of coziness, whilst combining a daring style with smooth edged corners sculpted for an effortless look.



# TRANQUIL *homes*



Come home to an opulent setting, where minimalism meets elegance, so spacious for a worldly ambience. It's the home you've been waiting for.





# CHARMING *beach*

Cave into our coastline, where pristine waters meet crystal sands in the heart of the North Coast only 10 km away from Ras El Hekma. This is the place to be if you want to de-stress, bask in the sun or dive into our endless shades of blue waters.



# MASTER *plan*



*North Coast  
Hacienda West  
Boutique Development*



Where water is a way of *life*



Where everyday is a good *day*



Disclaimer:

1. Renders and accompanying visual materials are not to scale and are intended for illustrative purposes.
2. All Landscaping is not included in the property and solely for illustrative purposes.
3. Roof finishes and pergolas are for presentation purposes only and are optional based on client's request.
4. Palm Hills Developments retains the right to make alterations.

It's where dreams *awake*



Where every night is a  
*goodnight*



Disclaimer:

1. Renders and accompanying visual materials are not to scale and are intended for illustrative purposes.
2. All Landscaping is not included in the property and solely for illustrative purposes.
3. Roof finishes and pergolas are for presentation purposes only and are optional based on client's request.
4. Palm Hills Developments retains the right to make alterations.

# Beach House 1

*First Row*

Total Built Up Area: 339.85m<sup>2</sup>  
Average Land Area: 480.50m<sup>2</sup>



#### Disclaimer:

1. Renders and accompanying visual materials are not to scale and are intended for illustrative purposes.
2. All Landscaping is not included in the property and solely for illustrative purposes.
3. Roof finishes and pergolas are for presentation purposes only and are optional based on client's request.
4. Palm Hills Developments retains the right to make alterations.



# Beach House 1

## First Row



Ground Floor



First Floor

**Disclaimer:**

1. Renders and accompanying visual materials are not to scale and are intended for illustrative purposes.
2. All Landscaping is not included in the property and solely for illustrative purposes.
3. Roof finishes and pergolas are for presentation purposes only and are optional based on client's request.
4. Palm Hills Developments retains the right to make alterations.

# Beach House 2

## Second Row

Total Built Up Area: 263.97m<sup>2</sup>  
Average Land Area: 364.50m<sup>2</sup>



### Disclaimer:

1. Renders and accompanying visual materials are not to scale and are intended for illustrative purposes.
2. All Landscaping is not included in the property and solely for illustrative purposes.
3. Roof finishes and pergolas are for presentation purposes only and are optional based on client's request.
4. Palm Hills Developments retains the right to make alterations.

# Beach House 2

## Second Row



Ground Floor



First Floor

**Disclaimer:**

1. Renders and accompanying visual materials are not to scale and are intended for illustrative purposes.
2. All Landscaping is not included in the property and solely for illustrative purposes.
3. Roof finishes and pergolas are for presentation purposes only and are optional based on client's request.
4. Palm Hills Developments retains the right to make alterations.



# Beach House 3

Third Row

Total Built Up Area: 197.00m<sup>2</sup>  
Average Land Area: 269.50m<sup>2</sup>



**Disclaimer:**

1. Renders and accompanying visual materials are not to scale and are intended for illustrative purposes.
2. All Landscaping is not included in the property and solely for illustrative purposes.
3. Roof finishes and pergolas are for presentation purposes only and are optional based on client's request.
4. Palm Hills Developments retains the right to make alterations.

# Beach House 3

## Third Row



Ground Floor



First Floor

Disclaimer:

- 1. Renders and accompanying visual materials are not to scale and are intended for illustrative purposes.
- 2. All Landscaping is not included in the property and solely for illustrative purposes.
- 3. Roof finishes and pergolas are for presentation purposes only and are optional based on client's request.
- 4. Palm Hills Developments retains the right to make alterations.

# Beachfront chalet 1

Total Built Up Area: 155.65m<sup>2</sup>  
Average Land Area: 417.25 m<sup>2</sup>  
per Chalet



#### Disclaimer:

1. Renders and accompanying visual materials are not to scale and are intended for illustrative purposes.
2. All Landscaping is not included in the property and solely for illustrative purposes.
3. Roof finishes and pergolas are for presentation purposes only and are optional based on client's request.
4. Palm Hills Developments retains the right to make alterations.



# Beachfront chalet 1



Ground Floor



First Floor

#### Disclaimer:

1. Renders and accompanying visual materials are not to scale and are intended for illustrative purposes.
2. All Landscaping is not included in the property and solely for illustrative purposes.
3. Roof finishes and pergolas are for presentation purposes only and are optional based on client's request.
4. Palm Hills Developments retains the right to make alterations.

# Beachfront chalet 2

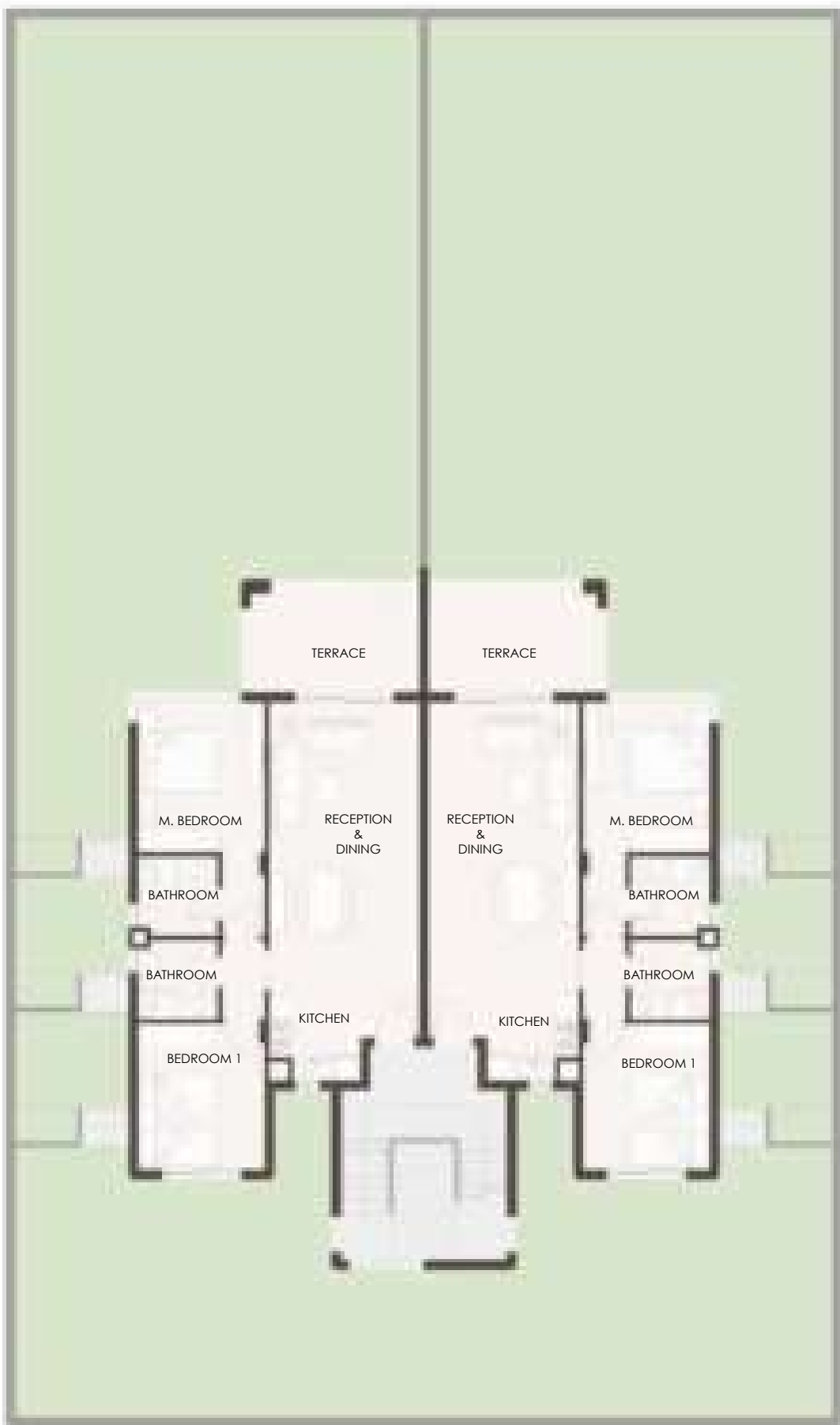
Total Built Up Area: 108.10m<sup>2</sup>  
Average Land Area: 377.75m<sup>2</sup>  
per Chalet



#### Disclaimer:

1. Renders and accompanying visual materials are not to scale and are intended for illustrative purposes.
2. All Landscaping is not included in the property and solely for illustrative purposes.
3. Roof finishes and pergolas are for presentation purposes only and are optional based on client's request.
4. Palm Hills Developments retains the right to make alterations.

# Beachfront chalet 2



Ground Floor



First Floor

#### Disclaimer:

1. Renders and accompanying visual materials are not to scale and are intended for illustrative purposes.
2. All Landscaping is not included in the property and solely for illustrative purposes.
3. Roof finishes and pergolas are for presentation purposes only and are optional based on client's request.
4. Palm Hills Developments retains the right to make alterations.



# New chalet

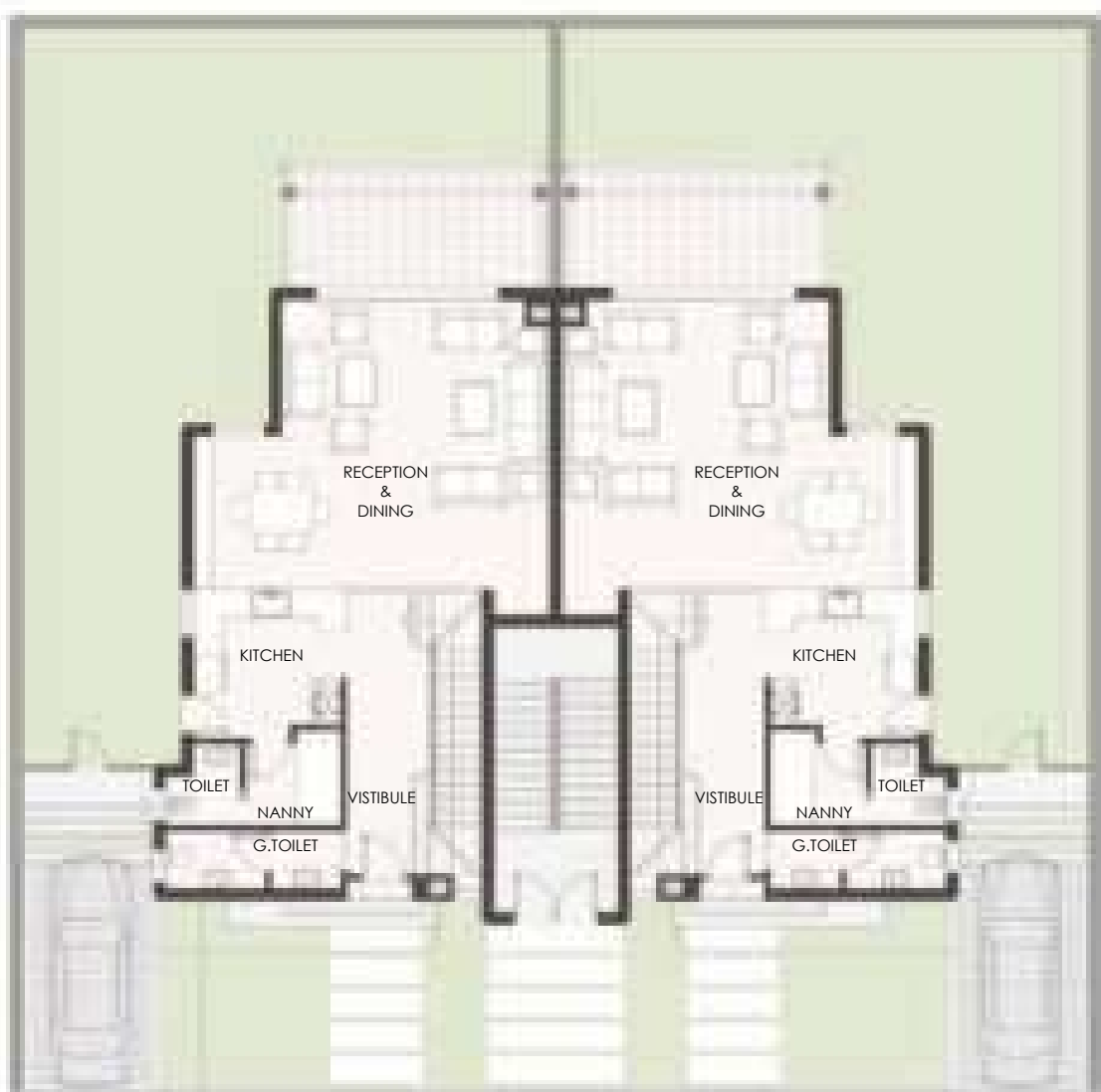
Total Built Up Area: 202.32m<sup>2</sup>  
Average Land Area: 334.00m<sup>2</sup>  
per Chalet



#### Disclaimer:

1. Renders and accompanying visual materials are not to scale and are intended for illustrative purposes.
2. All Landscaping is not included in the property and solely for illustrative purposes.
3. Roof finishes and pergolas are for presentation purposes only and are optional based on client's request.
4. Palm Hills Developments retains the right to make alterations.

# New chalet



Ground Floor



First Floor



Roof

#### Disclaimer:

1. Renders and accompanying visual materials are not to scale and are intended for illustrative purposes.
2. All Landscaping is not included in the property and solely for illustrative purposes.
3. Roof finishes and pergolas are for presentation purposes only and are optional based on client's request.
4. Palm Hills Developments retains the right to make alterations.

# 3 in 1 chalet

Total Built Up Area: 202.32m<sup>2</sup>  
Average Land Area: 417.25m<sup>2</sup>  
per Chalet



#### Disclaimer:

1. Renders and accompanying visual materials are not to scale and are intended for illustrative purposes.
2. All Landscaping is not included in the property and solely for illustrative purposes.
3. Roof finishes and pergolas are for presentation purposes only and are optional based on client's request.
4. Palm Hills Developments retains the right to make alterations.



# 3 in 1 chalet



Ground Floor



First Floor

#### Disclaimer:

1. Renders and accompanying visual materials are not to scale and are intended for illustrative purposes.
2. All Landscaping is not included in the property and solely for illustrative purposes.
3. Roof finishes and pergolas are for presentation purposes only and are optional based on client's request.
4. Palm Hills Developments retains the right to make alterations.

# Hazel Building

Apartment 01 Area: 146.1m<sup>2</sup>  
Apartment 02 Area: 102.67m<sup>2</sup>  
Apartment 03 Area: 139.82m<sup>2</sup>  
Apartment 04 Area : 139.82m<sup>2</sup>  
Apartment 05 Area: 102.67m<sup>2</sup>  
Apartment 06 Area: 146.1m<sup>2</sup>



## Disclaimer:

1. Renders and accompanying visual materials are not to scale and are intended for illustrative purposes.
2. All Landscaping is not included in the property and solely for illustrative purposes.
3. Roof finishes and pergolas are for presentation purposes only and are optional based on client's request.
4. Palm Hills Developments retains the right to make alterations.

# Hazel Building

Ground Floor



First Floor



Roof



**Disclaimer:**

1. Renders and accompanying visual materials are not to scale and are intended for illustrative purposes.
2. All Landscaping is not included in the property and solely for illustrative purposes.
3. Roof finishes and pergolas are for presentation purposes only and are optional based on client's request.
4. Palm Hills Developments retains the right to make alterations.



# Pine Building

Apartment 01 Area: 149.70m<sup>2</sup>  
Apartment 02 Area: 107.10m<sup>2</sup>  
Apartment 03 Area: 107.10m<sup>2</sup>  
Apartment 04 Area : 142.22m<sup>2</sup>



## Disclaimer:

1. Renders and accompanying visual materials are not to scale and are intended for illustrative purposes.
2. All Landscaping is not included in the property and solely for illustrative purposes.
3. Roof finishes and pergolas are for presentation purposes only and are optional based on client's request.
4. Palm Hills Developments retains the right to make alterations.

# Pine Building

Ground Floor



First Floor



Roof



**Disclaimer:**

1. Renders and accompanying visual materials are not to scale and are intended for illustrative purposes.
2. All Landscaping is not included in the property and solely for illustrative purposes.
3. Roof finishes and pergolas are for presentation purposes only and are optional based on client's request.
4. Palm Hills Developments retains the right to make alterations.

# Aria Cabana

Total Built Up Area:  
45.10m<sup>2</sup>

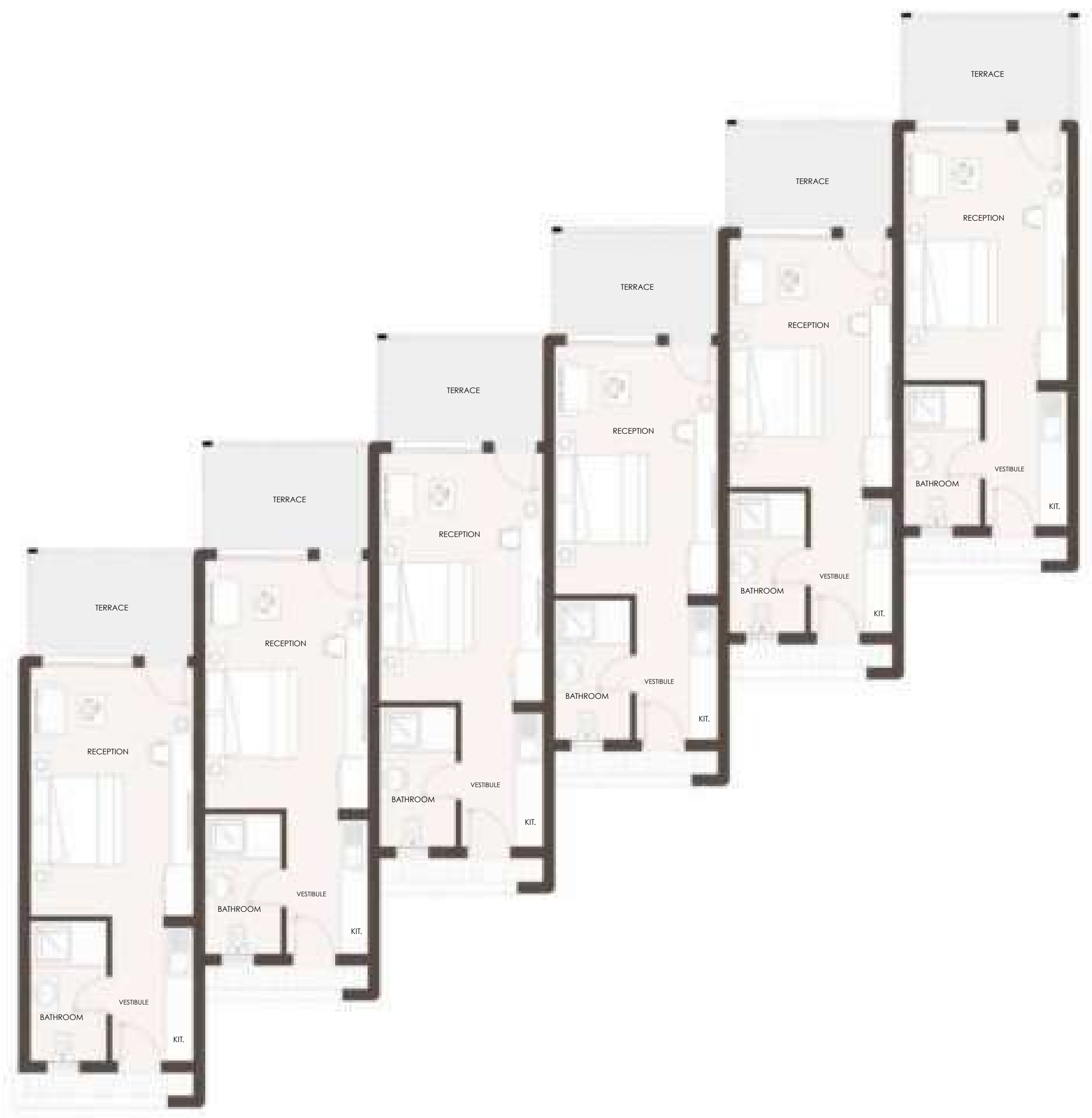


#### Disclaimer:

1. Renders and accompanying visual materials are not to scale and are intended for illustrative purposes.
2. All Landscaping is not included in the property and solely for illustrative purposes.
3. Roof finishes and pergolas are for presentation purposes only and are optional based on client's request.
4. Palm Hills Developments retains the right to make alterations.



# Aria Cabana



**Disclaimer:**

1. Renders and accompanying visual materials are not to scale and are intended for illustrative purposes.
2. All Landscaping is not included in the property and solely for illustrative purposes.
3. Roof finishes and pergolas are for presentation purposes only and are optional based on client's request.
4. Palm Hills Developments retains the right to make alterations.



# **PALM HILLS**

## **DEVELOPMENTS**

### **ZAMALEK:**

1, El Kamel Mohamed St.  
Tel: +202 2737 5530 - 31 - 32 - 33

### **5<sup>th</sup> SETTLEMENT:**

Namaa Building # 75,  
1st section, Road 90  
Tel: +202 2810 4530 - 31 - 33

### **6<sup>th</sup> OF OCTOBER:**

Palm Hills October (Palm Central)  
Tel: +202 3886 0103-04  
Ext: 8812  
Mob: +2 010 6668 6108

### **ALEXANDRIA:**

30 Patrice Lumumba,  
Tel: +203 033926010 - 033926002

# 19743

[www.palmhillsdevelopments.com](http://www.palmhillsdevelopments.com)